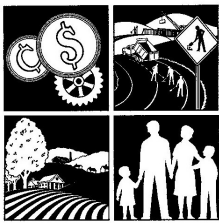


# Franklin Regional Council of Governments

<b>Meeting Minutes: Franklin Regional Emergency Planning Committee –Planning Subcomm.</b>			
<b>Date</b>	July 26, 2011	<b>Location</b>	Greenfield Fire Station 412 Main St. Greenfield, MA
<b>Time</b>	9:30 – 11:00 a.m.	<b>Duration</b>	1.5 Hours
		<b>Facilitator</b>	Bob Strahan, Co-Chair Bob Escott, Co-Chair
		<b>Call in # PIN Code</b>	

<p><b>ATTENDEES:</b>          Bob Escott, Montague EMD          John Taylor, Shelburne EMD          Walter Tibbetts, Shutesbury Fire Chief          Butch Garrity, Shelburne Control</p> <p><b>FRCOG STAFF:</b>          Tracy Rogers          Pat Smith</p>	<p><b>ABSENT:</b>          Dave Chichester, Conway Board of Health          Carolyn Shores Ness, Deerfield Selectman          Bob Strahan, Greenfield EMD</p> <p><b>GUESTS:</b>          Chuck Washer, FRPB</p>
--	---

Agenda Items	Point Person(s)	Discussion and Motions
1. Welcoming Remarks/Agenda/ Introductions	Bob Escott	Meeting was called to order at 9:32 a.m.
2. Approval of April 14, 2011 Minutes	Bob Escott	Tabled until quorum is present.
3. Disaster Recovery Planning	Tracy Rogers	<p>Tracy reported that she received a \$20,000 grant from Homeland Security to write a disaster recovery plan for Franklin County. Some portions of the plan can be written on a countywide level, some portions will need to be town-specific.</p> <p>Tracy presented a draft table of contents for the plan. The Committee made suggestions on the table. Members suggested determining what questions will need to be answered on the local level and sending that list out to EMDs, selectmen, planning boards, etc. now so they will be more prepared to answer them Tracy meets with them in the future.</p>
4. Evacuation Planning	Pat Smith	<p>Pat reported that massDOT has evacuation plans using I-91 from Holyoke south; nothing north of Holyoke. She asked for feedback on a Franklin County evacuation map compiled from town CEMPs and stated that we need to make sure the planning is coordinated between towns so one isn't sending people south on the highway, while the other is sending them north, for example. Pat will be meeting directly with MEMA to get their current routes and their feedback on our plan. Any revised routes will</p>



# Franklin Regional Council of Governments

		<p>need to be put back into town CEMPs when done.</p> <p>Members suggested making sure regional shelters are along the route. Pat will see if there is, or could be, an app to send evacuation routes to GPS units to help residents know which way to go. Traffic control points need to be identified (should be in CEMPs already). Perhaps we need to have detour signs available at the county level (any given town only has a few). Maps with overlays depending on the hazard would be useful as well as height and weight restrictions for vehicles.</p> <p>Pat offered to provide sample maps for the 9/1 DHS communications drill in Deerfield.</p>
5. Business Not Reasonably Anticipated 48 Hours Prior to the Meeting	Bob Strahan, Bob Escott	<p><u>Regional EOC:</u> Bob Escott offered Montague as a possible location for a regional EOC. Tracy suggested that, if a new regional emergency communications center is built after the feasibility study is done, that that building may be a good place for a regional EOC.</p> <p><u>Regional Sheltering:</u> Tabled.</p>
6. Wrapping Up and Adjournment	Bob Strahan	<p>Walt moved to adjourn the meeting. Butch seconded the motion and the meeting was adjourned at 10:55 a.m. <b>Next meeting date TBD.</b></p>
7. List of Documents Considered in the Meeting	<ul style="list-style-type: none"> <li>• 4/14/11 minutes</li> <li>• Table of contents for disaster recovery plan</li> <li>• Sample disaster recovery plan from Manhattan Beach</li> <li>• Draft evacuation map</li> </ul>	