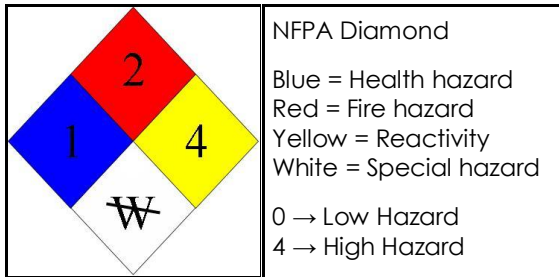


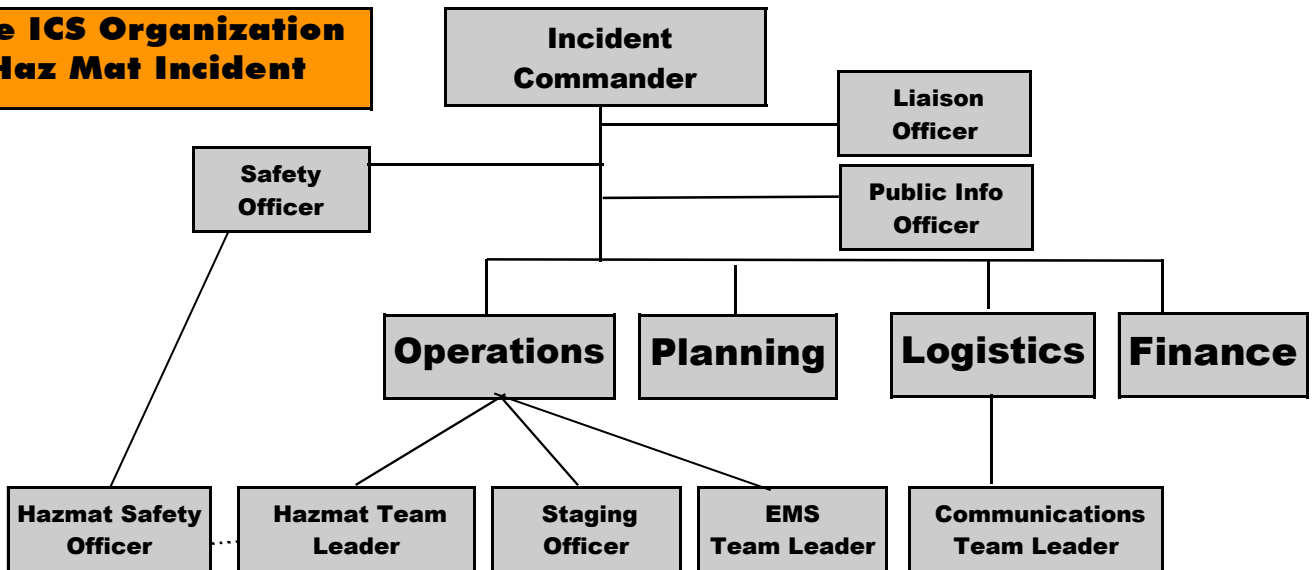
HAZ MAT ACTION GUIDE

This Hazardous Materials Response Action Guide has been developed by the Franklin County Regional Emergency Planning Committee to assist first responders in organizing an effective response to a hazardous material emergency. This Guide is designed to be used **in addition to** the most recent edition of the **Emergency Response Guide** book (ERG). **SEE THE REVERSE SIDE OF THIS SHEET FOR INITIAL ACTION STEPS.**



State Control Center (MEMA)
 1-508-820-2000
 Chemtrec (Haz Mat Transport)
 1-800-262-8200
 Fire District 9 Control Point (Shelburne Control)
 1-413-625-8200
 Haz Mat District 4 Team (Chicopee Fire)
 1-413-594-1600

Sample ICS Organization For a Haz Mat Incident



MA Haz Mat Team Tiered-Response System

Request the State Haz Mat Team by calling the District Control Point (Shelburne Control). Prepare to give or verify the following: quantity and type of materials involved, location of an assembly point for team members, radio identifier of the person assigned to meet the incoming team, location of parking area for team members, plan in place to shuttle team members from parking area to scene, and the Tier level you need. See table below.

TIER	Type of Situation:	Team Response:
1	Hazard & Risk Assessment or Suspicious Substance Investigation	TOMs Unit (ORU Optional) (5 Techs)
2	Short Term Entry Operation	TOMs Unit & ORU (1/2 Team)
3	Long Term and/or Immediate Life Safety Risk	TOMs Unit & ORU(s) (Full Team)
4	Major Release or Extended Operation	Multi-Team
5	WMD or Mass Casualty	Full Haz Mat System plus Bomb Squad and CST activated

Communications Plan

Identify radio frequencies to be used for emergency communications. A communications plan must be developed and approved by the IC, and shared among response agencies and the District Control Point. Attempt to keep regular dispatching channels clear for other emergency traffic. Consider gaining assistance from state and regional communications teams by calling the local or State Control Center.

Dispatch Channels — Keep "Simulcast" Channels free for dispatching and coordination of mutual aid units.

Command Channels — Assign "Regional Repeater" channel(s) for command staff communication with one another and the District Control Point.

Tactical On-Scene Channels — Assign additional channels for on-scene coordination. Based on the size of the incident and units involved this may include local TAC, UTAC, ITAC and local public safety frequencies.

Assume Command/Control

The first arriving public safety responder assumes the position of "incident commander" (IC) and is responsible for implementing the Incident Command System. The IC should assign crew members according to their level of expertise and the needs of the incident, and coordinate response to the incident until relieved by a higher ranking officer. Typically, the senior Fire Official on scene is responsible for coordinating a Haz Mat Response. Locate a command post uphill and upwind from the emergency.

Analyze Situation & Haz Mat Involved

Use any resources available to determine the type of material involved including: facility or transportation personnel present, the 4 digit ID number on placard/panel, shipping documents, container types/markings, NFPA marking system, and the orange ERG book. What is the quantity involved? Have materials been released?

Determine the Incident Hazard Level

The response is based on the complexity of the incident. For purposes of consistency, the following definitions have been developed for this plan:

Level 1 – Controlled Emergency Condition (e.g. diesel fuel spill of 20 gallons)

- Incident that can be controlled by the first response agencies of a local jurisdiction
- Single jurisdiction and limited agency involvement
- Does not require evacuation, except for the structure or affected facility
- Confined geographic area
- No immediate threat to life, health or property

Level 2 – Limited Emergency (e.g. leaking propane delivery vehicle)

- Potential threat to life, health or property
- Expanded geographic scope
- Limited evacuation of nearby residents or facilities
- Involvement of one, two, three, or more jurisdictions
- Specialist or technical team is called to the scene
- Combined emergency operation such as fire fighting and evacuation, or containment and medical care

Level 3 – Full Emergency Condition (e.g. rail car derailment with haz mat release)

- Serious hazard or severe threat to life, health and property
- Large geographic impact
- Major community evacuation
- Multi-jurisdictional involvement
- State and Federal involvement
- Specialists and technical teams deployed
- Extensive resource management and allocation
- Multiple emergency operations

Notifications and Mutual Aid

Notify the District Control Point of the Incident Hazard Level determined above, verify IC designation (e.g. "Main St Command"), the radio channels to be used, the location of command post, and request additional resources as needed. The Control Point will initiate notification of local, state and federal agencies as appropriate.

Develop Initial Action Plan

Considerations for ALL LEVELS 1, 2 or 3:

1. How do we best provide responder safety?
2. Can we accurately identify the products involved?
3. How do we control access to the site?
4. What are the immediate and possible future needs for evacuation of the public?
5. Is Haz Mat Tier 1 response needed to provide technical assistance? (see reverse for Haz Mat Team Info)
6. Have we documented current incident command structure?
7. Should IC delegate to others to best assure proper span of control?
8. Are we documenting resources/equipment/personnel used?

Additional Considerations for Hazard Levels 2 and 3:

9. Is Haz Mat Team Tier 2 or 3 response indicated?
10. Has Haz Mat Team activated local Mass Decontamination Units (MDUs) to support Haz Mat Team?
11. Should the local Emergency Operations Center be activated?
12. Is regional Haz Mat Plan and resource guide ready and available at EOC and Shelburne Control?
13. Are there multiple injuries? Does this call for use of county Multiple Casualty Incident (MCI) Plan?
14. What is potential means of travel of haz mat—airborne, waterways, public water/sewer?
15. What is best means to notify public of need to shelter in place or evacuate?
16. If evacuation underway where is shelter located? How staffed?
17. Where is the staging area for additional resources/mutual aid?
18. Are specialized resources needed to assist with communication/command/rehab/sheltering?
19. Are additional notifications indicated (neighboring towns/state agencies/local officials)?
20. Is there need to provide for rest/rehabilitation/medical monitoring of response personnel?

Additional Considerations for Hazard Level 3 (if not already in place):

21. Request Haz Mat Tier 2 or Tier 3 response.
22. Transform IC to a Unified Command Post to coordinate response.
23. Activate local Emergency Operations Center for assistance.
24. Expand ICS to include planning, logistics and finance sections.
25. Activate state and/or regional communications team via State Control.
26. Identify Public Information Officer and a remote location at which to update media regularly.