

# 495/MetroWest Development Compact Regional Planning Study

Regionalization Conference  
2011



# About the Project

## Funding:

Executive Office of Housing and Economic Development

## Project partners:

Central Massachusetts Regional Planning Commission

Metropolitan Area Planning Council

MetroWest Regional Collaborative

495/MetroWest Partnership

Mass Audubon

## Scope:

37 cities and towns

## Objective:

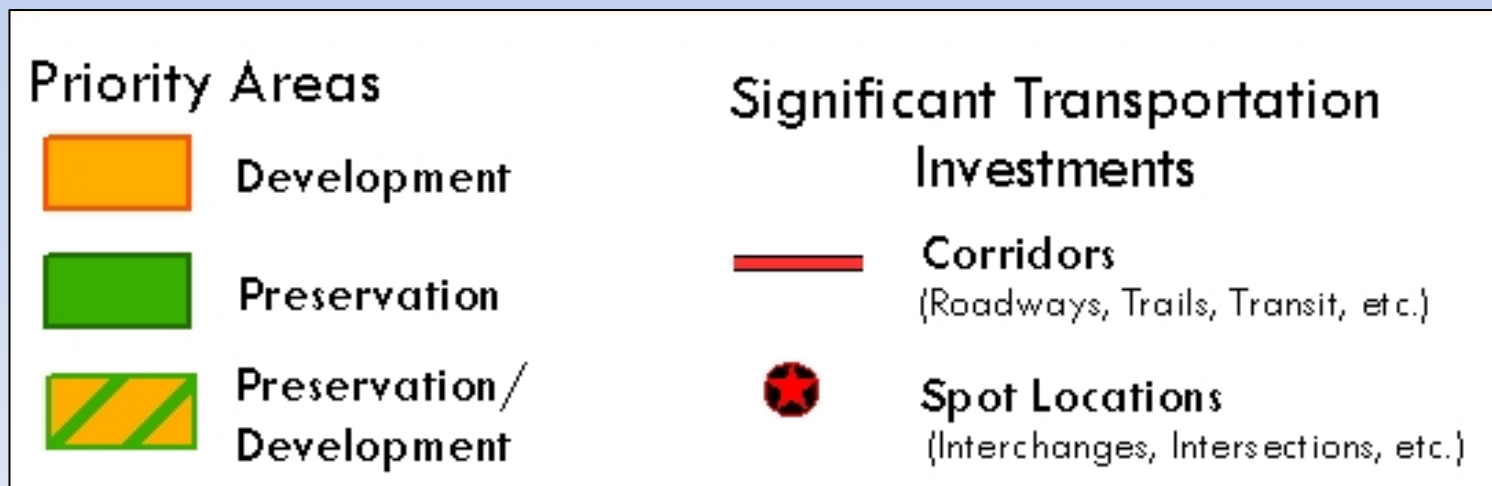
30-year framework for land use and infrastructure investment in the region

# Fundamental Principles

1. New Growth will likely require transportation & infrastructure upgrades, beyond what is needed to maintain the existing systems.
2. New Commercial & residential growth must occur in a manner respectful of open space, water resources, & transportation networks.
3. Land use & transportation decisions must account for the Global Warming Solutions Act & the transportation reorganization statute.
4. Workforce housing must continue to be produced & preserved within the region at a scale that allows the number of workers living in the region to keep pace with the new jobs created.
5. Sustainable growth will involve the creation and maintenance of an effective public transit system coordinated with existing transit.
6. Coordinated planning & implementation efforts are necessary where jurisdictions and boundaries intersect.

# Project Process

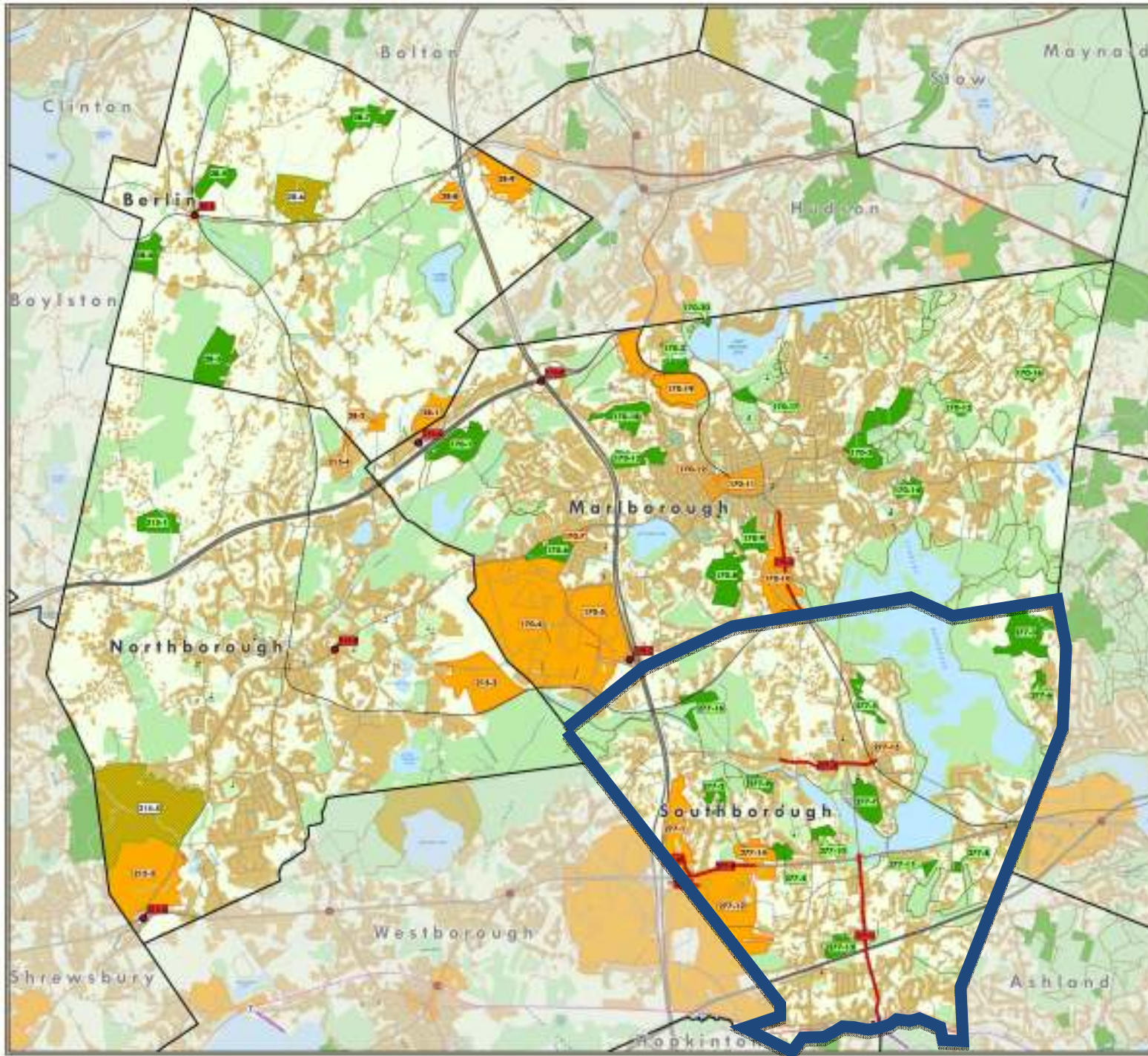
- **Create a shared framework for state, regional and local strategies for priority development and land preservation as well as infrastructure investments**
- **Encourage Regional Context for Planning**
- **Raise Awareness of Commonalities and Differences in Land Use Goals**
- **Uses a Local Perspective to Identify:**
  - Priority Areas
  - Significant Infrastructure Investments







# Priority Development and Preservation Base Map: Marlborough, Northborough Berlin and Southborough



<b>Priority Areas</b>	<b>Significant Transportation Intersections</b>
Development	Corridor Intersections (Auto, Train, etc.)
Preservation	Spot Location Intersections (Intersections only)
Preservation/Development	
Water Bodies	<b>Clear Space</b>
<b>Roads</b>	Presumably Protected
Highway	Partial Protection (Parkway, State or Field of Cornfield)
Main and US Roads	Schools (PK - High School)
Major Road	Open Park
Minor Road	Park and Bike Lane
Municipal Boundaries	
<b>Commuter Rail</b>	<b>Land Use (2009)</b>
Station	Underdeveloped
Commuter Rail Line	Developed
Train Tracks	
Existing Trails	
Proposed Trails	



The information displayed on this map is for general guidance only. It is not intended for engineering, planning, regulatory, or public works analysis.

This is an initiative of the Executive Office of Planning and Economic Development.

Produced for:  
MAPC (see below)  
40 North Plain Street, 01501-1295, 015-279-1000  
www.mapc.org

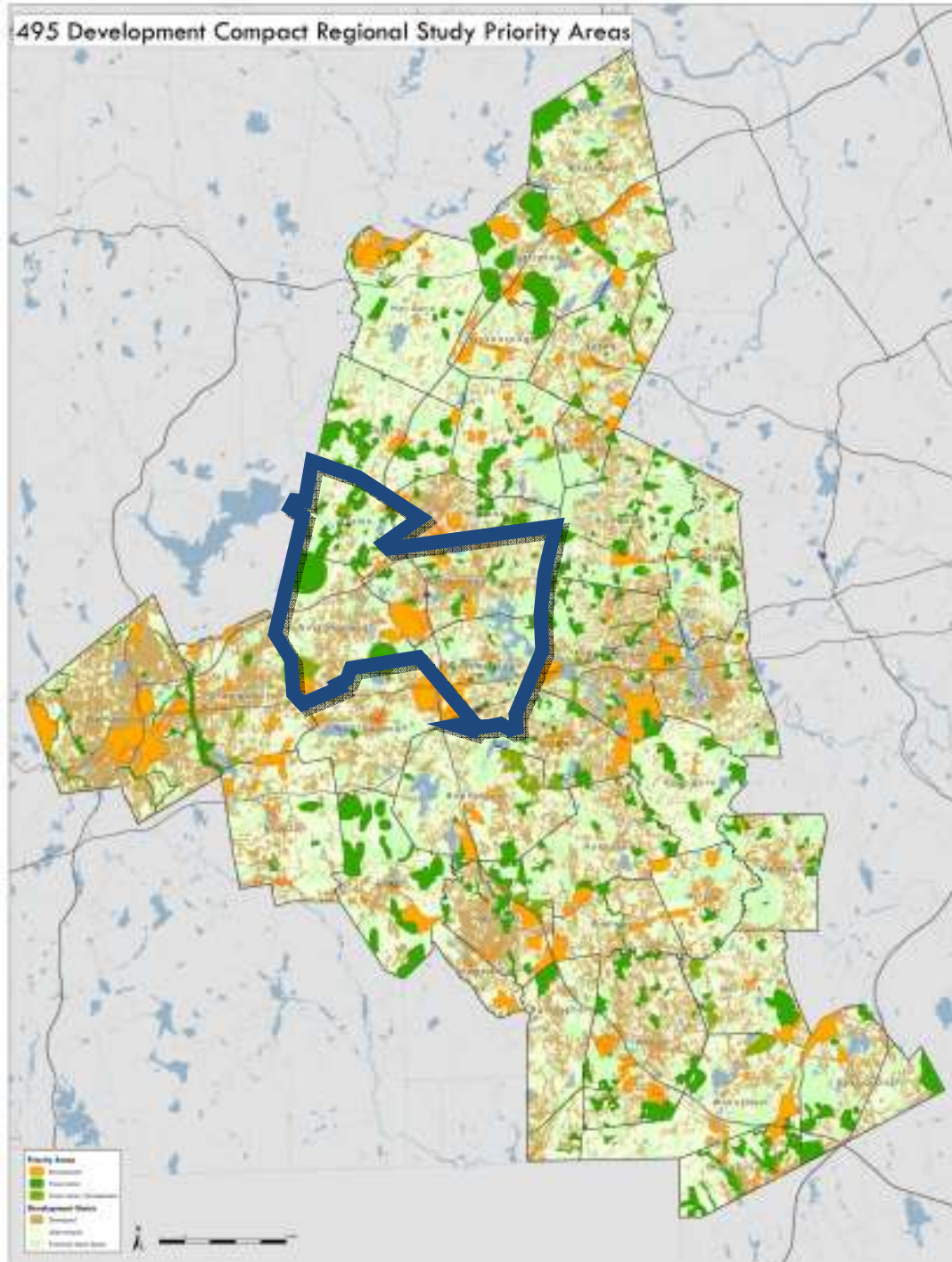
Produced for:  
Executive Office of Planning and Economic Development  
100 State Street, 01501-1295, 015-279-1000  
www.eopled.com

Map Sources:  
Road and Rail: Massachusetts Department of Transportation (MassDOT)  
MapSource: Geographic Information System (MapInfo)  
MapSource: Massachusetts Department of Transportation (MassDOT)  
MapSource: Massachusetts Department of Transportation (MassDOT)  
MapSource: Massachusetts Department of Transportation (MassDOT)

Scale: 1:100,000

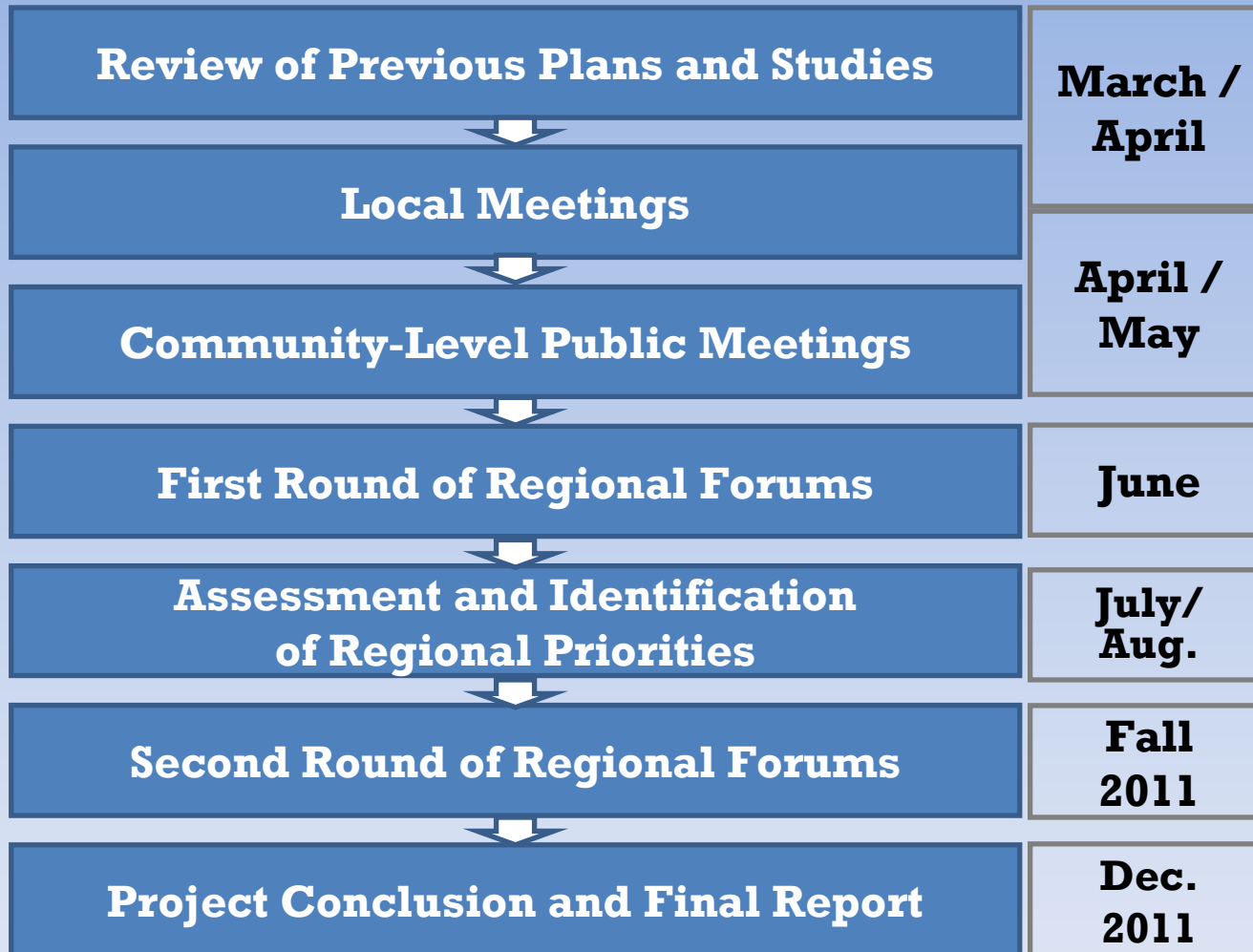
## 495/MetroWest Development Compact

495 Development Compact Regional Study Priority Areas



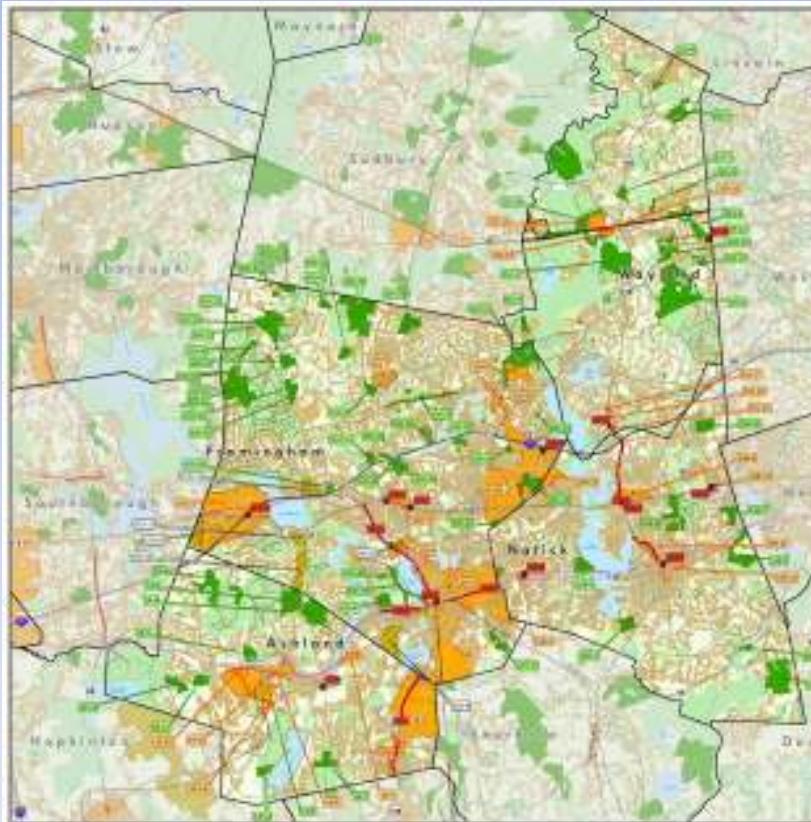
# 495/MetroWest Development Compact Regional Study

## *Study Process and Timeline*



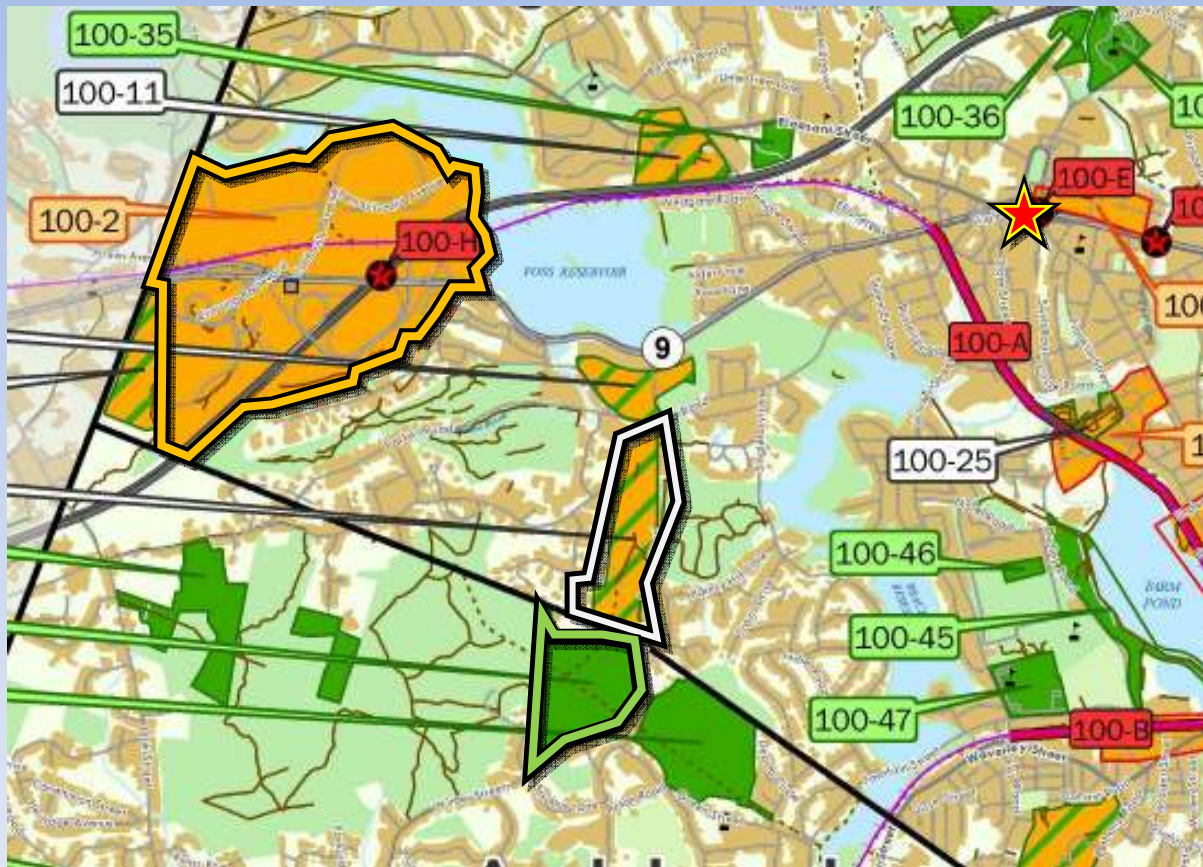
# Review Maps

- Get familiar with your municipality and your neighbors



# Identifying Priorities

- Identify regional priorities for growth, preservation and infrastructure investments



# Identifying Priorities

9 dots to identify regionally significant Priority Areas.

**3** **Priority Development**

**3** **Priority Preservation**

**3** **Significant Infrastructure**

# **Regional Concepts for Prioritization**

**Land Use**

**Environmental  
Resources**

**Environmental  
Justice**

**Water  
Resources**

**Transportation  
Resources**

**Agricultural  
and Historical  
Resources**

# Next Steps

- **Regional Screening by Regional Planning Agencies**
  - **Over Summer**
    - Central Massachusetts Regional Planning Commission and the Metropolitan Area Planning Council
- **Second Set of Regional Presentations to present Regional Priorities and Infrastructure Investments**
  - Fall 2011
- **Learn more, get involved and stay up to date by visiting [www.495partnership.org/compact](http://www.495partnership.org/compact)**

# 495/MetroWest Development Compact



Executive Office  
of Housing and  
Economic Development



For the last twenty years, the communities in the 495/MetroWest region of Massachusetts have undergone significant growth in employment and population. Looking forward, the region's public and private sector leaders recognize the need for collaborative approaches to infrastructure and land use to ensure the vitality of the region's economy and quality of life.

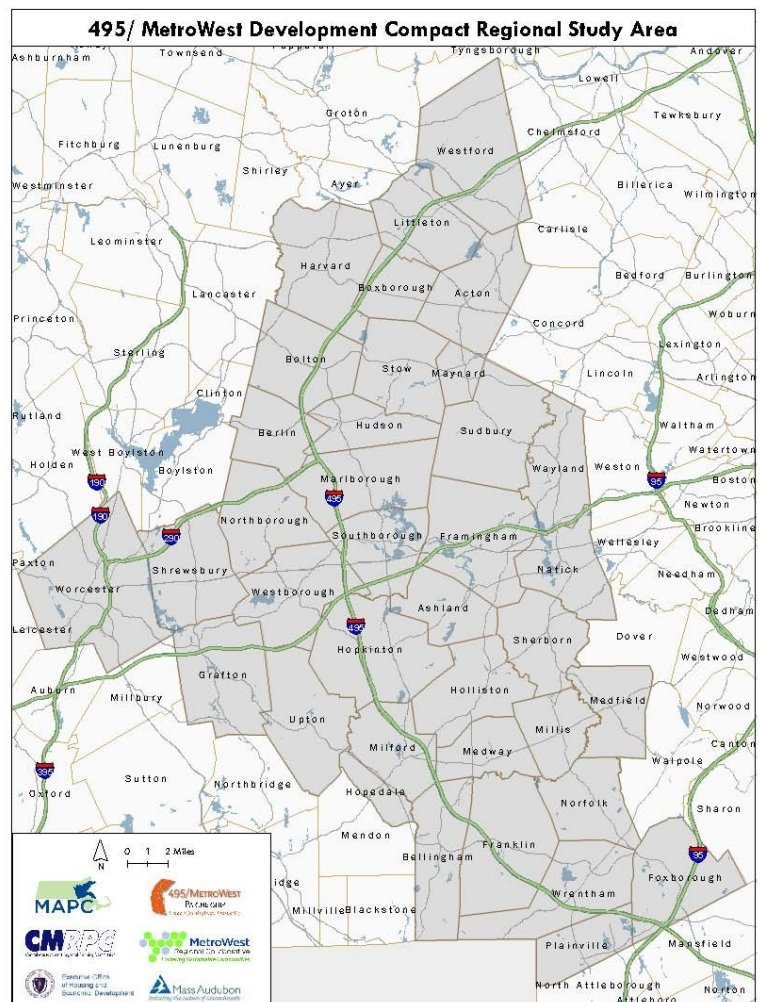
The 495/MetroWest Development Compact is creating a shared framework for state, regional, and local strategies for priority development and land preservation as well as transportation and other infrastructure investments in the 37 municipalities within the study area.

The Patrick-Murray Administration through Executive Office of Housing & Economic Development is partnering with Central Massachusetts Regional Planning Commission, the Metropolitan Area Planning Council, the MetroWest Regional Collaborative, the 495/MetroWest Partnership, and Mass Audubon to engage the region in the preparation of a comprehensive land use and development plan for the 495/MetroWest region, modeled on the award-winning South Coast Rail Corridor Plan. A key component of this plan will be identifying priority development and preservation areas and significant transportation and infrastructure investments for the region (see next page for more information). Like the South Coast Plan, the 495/MetroWest plan will be prepared in collaboration with regional and local participants and engage both public and private sectors to form the framework for public decision-making in land use regulation and infrastructure investment within the region over the next twenty years.

*The Compact is guided by six fundamental principles:*

- Continued new growth will likely require major transportation and other infrastructure upgrades, beyond what is needed to keep existing systems in good repair;
- New commercial and residential growth must occur in a manner that is respectful of open space resources, transportation networks, and water resources in the region;
- Land use and transportation decisions must take into account the principles established by the Global Warming Solutions Act and the transportation re-organization statute;
- Workforce housing must continue to be produced and preserved within the region;
- Sustainable new growth will involve the creation and maintenance of an effective public transit system; and
- Coordinated planning and implementation efforts between jurisdictions are necessary.

The project is slated to be completed by December 31, 2011.



Visit the project website at:  
[www.495partnership.org/compact](http://www.495partnership.org/compact)

### Priority Development Areas (PDA)

Locations potentially capable of supporting additional development or redevelopment, but that may first require additional investments in infrastructure.

May be a single use or mixed-use: a combination of retail, commercial, office, or housing.

Can range in size from a single lot to many acres.

May include adaptive reuse of existing buildings to preserve sense of place.

Generally characterized by good access, available infrastructure (primarily water and sewer), and an absence of environmental constraints.

Areas have undergone extensive area-wide or neighborhood planning processes and may have detailed recommendations for future actions.

Areas designated under state programs such as Chapter 43D (expedited permitting), Chapter 40R (smart growth zones) or Economic Opportunity Areas can be examples of PDAs.

### Priority Preservation Areas (PPA)

Deserve special protection due to significant environmental factors and/or natural features, such as endangered species habitats, large blocks of high quality intact habitat (BioMap2), areas critical to water supply, scenic vistas, areas important to a cultural landscape, or areas of historical significance.

Are not currently permanently protected (e.g., via conservation restriction, municipal or state conservation land, land trust ownership, etc.).

In general, existing parks or new park facilities would not fall within this category.

May be critical to linking open space and also trails within a community across municipal boundaries that are part of a larger, regional network.

### Significant Transportation Investments (STIs)

Transportation projects that have the potential to increase efficiency and enhance interconnectivity for facilities which serve regional transportation needs.

May be a project in a town or within a town's subregion.

In most cases, these potential projects address major roadways as well as transit, bicycle, and pedestrian facilities that either individually or collectively serves regional travel needs.

May include improvements for commercial airports and intermodal freight facilities that are key to the regional economy.

Locally identified projects, along with projects from other statewide and regional planning documents, will be evaluated to develop an initial set of Regionally Significant Transportation Investments (RSTIs).

### Significant Infrastructure Investments (SIIs)

Are infrastructure projects that have the potential to increase efficiency and capacity and enhance development potential for facilities/sites which serve regional needs.

May be a project in a town or within a town's subregion.

In most cases, these potential projects address water, sewer/wastewater, stormwater, and may include new infrastructure upgrades/increase in capacity to existing infrastructure that either individually or collectively serve regional needs.

Locally identified projects, along with projects from other statewide and regional planning documents, will be evaluated to develop an initial set of Regionally Significant Infrastructure Investments (RSIIs).