

Shelburne Falls Compost Collaborative



Amy Donovan, Program Director
Franklin County Solid Waste Management District



Franklin County Solid Waste Management District



22 member towns: 17 transfer stations, 29 public schools, plus private schools, businesses...

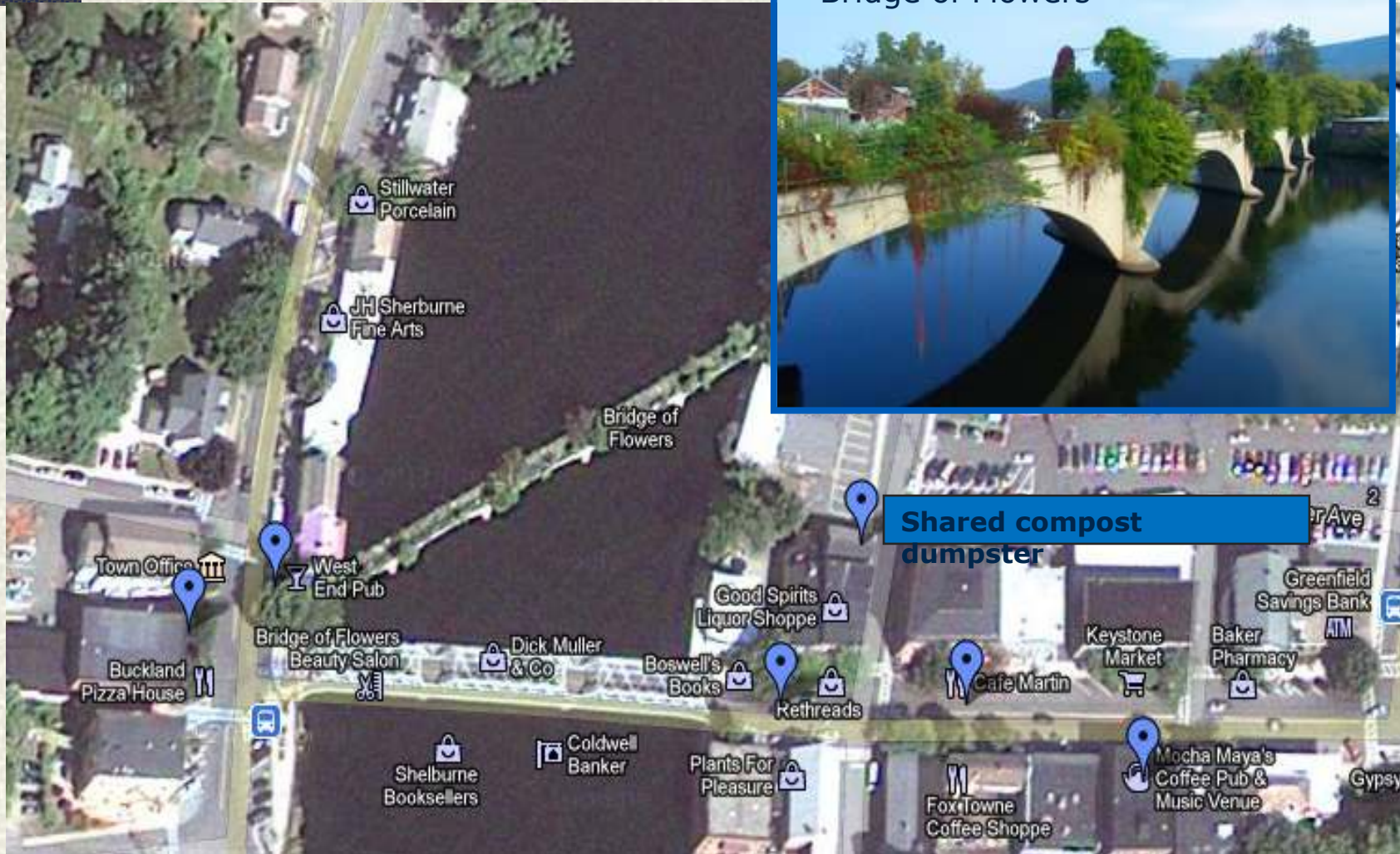
- ‡ Bernardston
- ‡ Buckland (GC)
- ‡ Charlemont
- ‡ Colrain
- ‡ Conway
- ‡ Deerfield (GC)
- ‡ Erving
- ‡ Gill
- ‡ Hawley
- ‡ Heath
- ‡ Leverett
- ‡ Leyden
- ‡ Montague (GC)
- ‡ New Salem
- ‡ Northfield
- ‡ Orange
- ‡ Rowe
- ‡ Shelburne
- ‡ Sunderland
- ‡ Warwick
- ‡ Wendell
- ‡ Whately

Location, location, location!



Shelburne Falls

Bridge of Flowers



Participating Businesses:

Eateries adding food and paper waste:

- Blue Rock Restaurant
- Café Martin
- Mocha Maya's Coffee
- Mo's Fudge Factor
- West End Pub

These businesses already have robust **recycling** programs for bottles, cans, containers, cardboard, etc.

Offices adding shredded paper:

- Mirick Insurance
 - Trailside Health
 - Greenfield Savings Bank
-

Compost what?

3 "sizes" of composting:

- Small: A **worm bin** uses red wiggler worms to consume food waste (*vermicomposting*)
- *Veggies, fruits only*
- Medium: **Backyard composting**
- *Veggies, fruit, bread, leaves, yard waste*
- *No meat, dairy, oils*



Large! **Commercial Composting (Organics Recycling)**

- Accepts *all food*: including meat, bones, dairy, grease, oils,
- Accepts *paper*: napkins, paper towels, egg cartons, paper plates, waxed cardboard, regular cardboard, regular paper
- Waste hauler can service dumpster/ toter



Windrows
At Bear Path
Farm

Martin's Farm in Greenfield accepts food and paper waste from schools, supermarkets, restaurants, and Northfield Transfer Station.

Windrow turner
at Martin's Farm



Compost facilities in Franklin County:

Martin's Farm, Bear Path Farm, Clear View Composting

To find a facility/ hauler near you, contact local waste haulers or

Sumner Martinson, MA DEP: sumner.martinson@state.ma.us,

617-292-5969

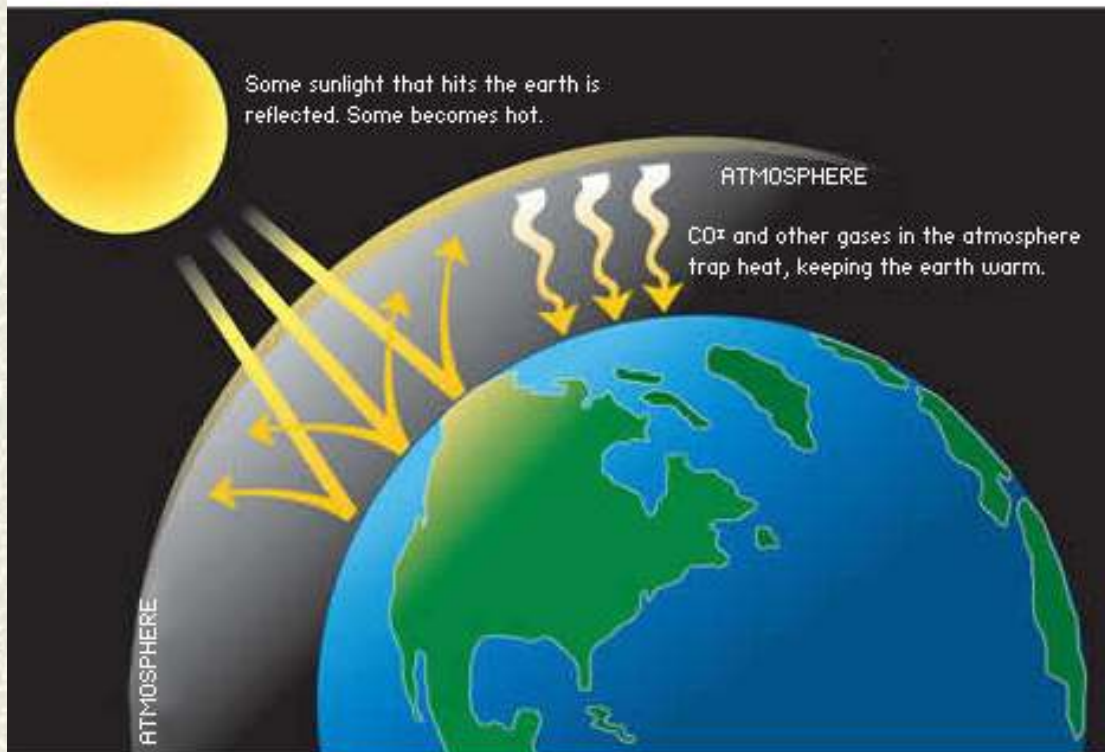


Windrows at
Martin's Farm

Composting helps slow Climate Change

Climate Change is caused by **greenhouse gases** in our atmosphere.

The Greenhouse Effect



Greenhouse Gases:
Carbon Dioxide
Methane
Nitrous Oxide

✦ When food waste (and paper) decay in a landfill, **methane** is released.

✦ **Methane** is a greenhouse gas **23 times** more powerful than carbon dioxide.



**Methane pipe at
a landfill**

***Composting* doesn't release methane because oxygen is part of the composting process. There is *no* oxygen in a landfill.**



**Compost bins
made from
reused pallets**

Why should restaurants compost?

- 60-80% of a restaurant / food service establishments' waste stream is comprised of compostable waste.
(Source: EPA)
- **62** foodservice operations in Cambridge compost!
- San Francisco
- Nova Scotia
- Toronto
- Northampton
- Shelburne Falls



Why should restaurants compost?



- Trash is more \$\$\$ than compost.
- Potential to save money: reduce waste disposal costs by reducing size or frequency of trash pickups.
- Examples of local waste hauling costs:
 - \$132/ month for **trash**: 2 yard dumpster, dumped weekly (\$33 per dump)
 - \$155/ month for **trash**: 2 yard dumpster, dumped 2x/ month (\$77/ dump)
 - \$70/ month for **compost**: 2 yard dumpster, dumped weekly (**\$17.50/dump**) - **Triple T only**
 - **SFCC**: \$130/ mo for **compost**: **4** yard dumpster, dumped weekly (**\$32/ \$16.25/dump adjusted**)

Business:	<u>Weekly</u> Volume: (1 cubic yard = 202 gallons)	Volume of waxed cardboard boxes	Cost 4 yard dumpster, summer: (\$130.00/month) (808 gal)	Cost 2 yard dumpster, winter: (\$60.00/month) (404 gallons)	Percentage of total:	# 4 gal. pails given:	Comments:	
Keystone Market	3 32-gallon trash bags/ week = 96 gallons	? No form?	\$31.20/ month	\$14.40/ month	24.3 %	8		
West End/Café Martin	30 5-gal pails/ wk = 150 gal.	6 boxes/ week	\$49.40/ month	\$22.80/ month	38 %	8		
Ollie's Down Under	15 5-gal pails/ wk = 75 gal.	This was our original worksheet for volume estimation and cost sharing.						
Mo's Fudge	12 5-gal. pails/ wk = 60 gal. <u>OR,</u> 9.5 pails = 38 gal???	0	\$13/ month	\$6/ month	10%	4	"4-6 5-gal pails/ week in winter; 10-15 5-gal pails in summer. We <i>averaged</i> the weekly vol.	
Mocha Maya's	7 5-gal. pails/ wk = 35 gal.	"minimal"	\$11.70/ month	\$5.40/ month	9 %	2		
Totals	416 gal./ wk	? (Keystone)	\$128.10/ month	\$60.00/ month		26 pails		

DO Compost:

ALL food wastes are acceptable:

- Plate scrapings
- Meat, fish, poultry, bones (cooked and uncooked)
- Cheese, eggs, eggshells
- Fruit & vegetables, peels
- Grains: bread, rice, pasta
- Grease, fats (no liquid oil)



DO Compost:



***Non recyclable** paper and cardboard:**



- Paper napkins, paper towels
- Paper plates, cups (no plastic lids or straws!)
- Flour, sugar, potato bags (no plastic)
- Paper egg cartons, packaging, drink holders
- Soiled/ waxed cardboard & pizza boxes
- Soiled/ waxed paper
- Small wooden fruit crates (no wire)



**Recyclable* paper and cardboard should be recycled, not composted.



DO Compost:



Certified Compostable Foodservice Items:

- Paper, "Fiber" Products!
- Compostable "plastic" made from corn, potatoes, sugarcane, PLA, etc., sometimes marked #7,
- Certified by Biodegradable Products Institute:
www.bpiworld.org
- *NO "compostable" utensils!*



DO Compost:



Certified Compostable Bags:

- Use to collect and transport food and paper waste in summer.
- Compostable “plastic” BAGS made from corn, potatoes, sugarcane, PLA, etc.,
- Must be certified by Biodegradable Products Institute: www.bpiworld.org
- Must be approved by the composting facility
- FCSWMD recommends: “Com-Plete” sold by Mansfield Paper.
- More expensive than traditional bags.



DO NOT Compost:

- Plastic, metal, glass
- Plastic coated paper
 - Some parchment paper/ butcher paper
- Liquids
- Liquid oil



Plate scrapings

- All food waste and paper napkins can be scraped into a pail or a larger container.
- **Train staff** not to compost coffee creamers, straws, etc.



Pictured: West End Pub table bussing area

In the prep area:



West End Pub food prep/
kitchen line bin

Potential problems, solutions

- Shared dumpster:
 - Location: central, away from houses
 - Avoid contamination (lock)
- Odors, flies in summer only:
 - Use compostable bags in summer
 - Add loose paper, all types: shredded paper, cardboard
 - Coffee grounds (loose) help
 - Get weekly pickup
 - If possible (may not be necessary)
 - Hose dumpster out w/ bleach or Pine Sol
 - Add sawdust, wood shavings, lime
- **Be patient and flexible!**





**Franklin County
Solid Waste Management District**

Amy Donovan
Program Director
Franklin County Solid Waste Management District
(413) 772-2438
amy@franklincountywastedistrict.org
www.franklincountywastedistrict.org